



MALHERBEX[™]
PROPERTY GROUP



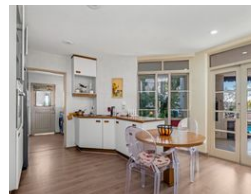
Sean O'Grady
0718429999
sean@malherbex.com

Contact Head Office

011 7869364

Unit 1 Cyrus House (Building 13) Mulberry
Hill Office Park, Dainfern, Sandton, 2191

3 Bedroom House For Sale in Lonehill



R3,200,000

3 2.5 2

Monthly Bond Repayment R31,948.16

Calculated over 20 years at 10.5% with no deposit.

Transfer Costs R184,520.00 **Bond Costs** R44,070.00

These calculations are only a guide. Please ask your conveyancer for exact calculations.

Monthly Levy R3,000

Sought after 3-bedroom, 2.5-bathroom double-storey residence with staff accommodation

Sole Mandate

Magical Mykonos Gem in the Heart of Lonehill

Welcome to your dream home! This stunning 3-bedroom, 2.5-bathroom double-storey residence with staff accommodation is a true oasis, combining modern elegance with Greek coastal charm. Nestled within a secure and highly sought-after estate in Lonehill, this home offers the perfect balance of serenity and sophistication – an ideal retreat for families or those wanting to downsize without compromising on quality or lifestyle.

Stylish Interiors

Step inside and be welcomed by a bright, airy open-plan living space featuring a seamless flow between the lounge, dining area, and kitchen.

• The kitchen is a chef's delight, boasting ample cupboard space, a walk-in pantry, elegant countertops, and room for a double-door fridge. A large central island makes it perfect for family...

Features

Pets Allowed	Yes				
Interior		Exterior		Sizes	
Bedrooms	3	Garages	2	Land Size	580m²
Bathrooms	2.5	Carports / Parkings	2		
Kitchens	1	Security	Yes		
Recep. Rooms	2	Dom. Accom.	1		
Studies	1	Pool	Yes		
Furnished	No	Views	False		

<https://www.malherbex.com>