



**MALHERBEX™**  
PROPERTY GROUP



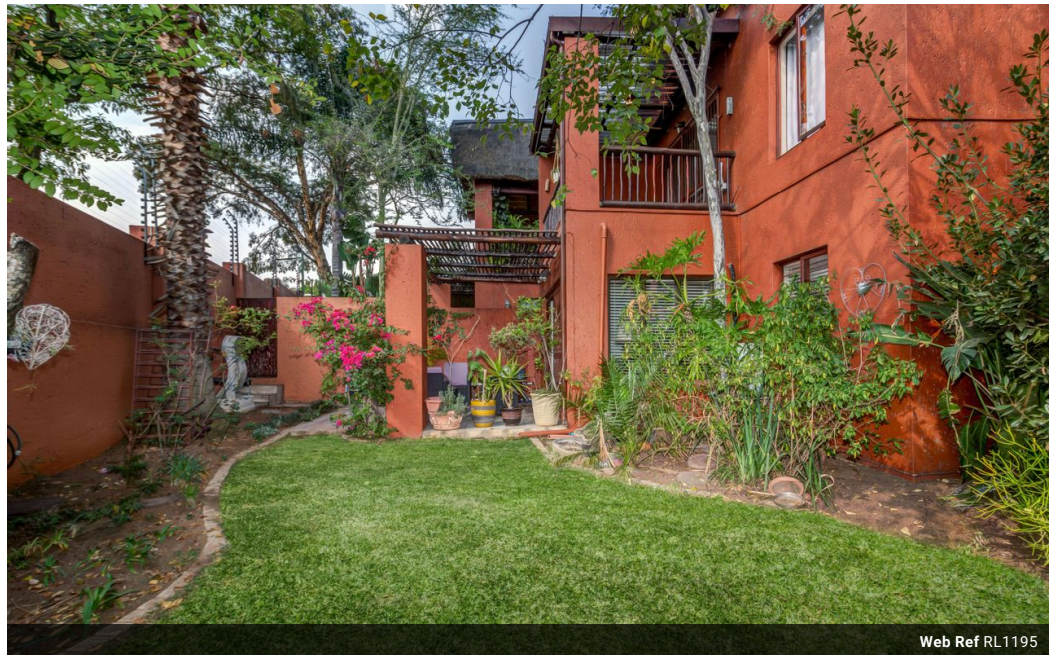
**Willie Malherbe**  
0834257174  
willie@malherbex.com

Contact Head Office

011 7869364

Unit 1 Cyrus House (Building 13) Mulberry Hill Office Park, Dainfern, Sandton, 2191

## 2 Bedroom Apartment For Sale in Sunninghill



Web Ref RL1195



R1,299,000

**Monthly Bond Repayment** R13,187.82  
Calculated over 20 years at 10.75% with no deposit.

**Transfer Costs** R37,587.00    **Bond Costs** R27,105.00

These calculations are only a guide. Please ask your conveyancer for exact calculations.



Ground floor with private garden

**EXCLUSIVE SOLE MANDATE:** Welcome to your own piece of paradise. Situated on the ground floor in a quiet part of the complex, enjoy the tranquility of your own private garden. The apartment offers a well equipped kitchen that flows towards the dining area and lounge with sliding doors leading to the private garden and patio. It further offers two bedrooms with the main bedroom being en-suite and air-conditioning. The property also comes with 2 parking bays.

The complex offers great security with communal pool with club house, braai facilities and so much more.

Call today for a private viewing.

At Malherbex Property Group, we endeavor to give you the most holistic property buying and selling advice. Contact us today to speak to one of our area specialists.

### Features

#### Interior

|              |    |
|--------------|----|
| Bedrooms     | 2  |
| Bathrooms    | 2  |
| Kitchens     | 1  |
| Recep. Rooms | 1  |
| Furnished    | No |

#### Exterior

|                     |       |
|---------------------|-------|
| Carports / Parkings | 2     |
| Security            | No    |
| Pool                | Yes   |
| Views               | False |

#### Sizes

|            |                   |
|------------|-------------------|
| Floor Size | 102m <sup>2</sup> |
|------------|-------------------|



<https://www.malherbex.com>