



MALHERBEX™
PROPERTY GROUP



Willie Malherbe
0834257174
willie@malherbex.com

Contact Head Office

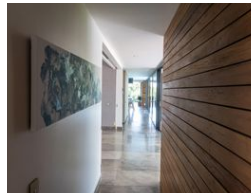
011 7869364

Unit 1 Cyrus House (Building 13) Mulberry
Hill Office Park, Dainfern, Sandton, 2191

4 Bedroom House For Sale in Hawaan Forest Estate



Web Ref RL1441



R14,895,000

4 5 4

Monthly Bond Repayment R151,218.35

Calculated over 20 years at 10.75% with no deposit.

Transfer Costs R1,578,827.00 **Bond Costs** R108,535.00

These calculations are only a guide. Please ask your conveyancer for exact calculations.

Monthly Levy R4,515 **Monthly Rates** R10,470

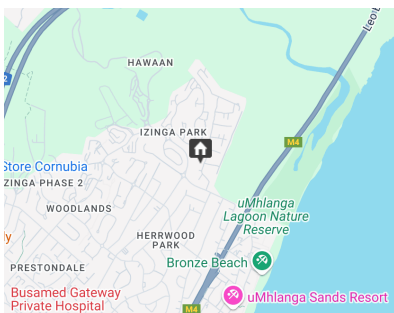
An Architectural Gem in sought-after Hawaan Forest Estate

Located in the highly sought-after Hawaan Forest Estate, this remarkable home seamlessly combines modern design with the beauty of nature, offering a luxurious and private lifestyle. Architecturally impressive, the residence boasts expansive living spaces, a seamless flow between indoor and outdoor areas, and breathtaking views of the sea.

A grand entrance hall on the lower level sets the tone for this sophisticated home, complete with an elegant water feature. The main living area on the ground floor features a spacious lounge and dining room, enhanced by a stylish bar or second lounge. Expansive glass stackable doors open directly to the outdoor entertaining spaces, allowing for natural light to flood the home and providing easy access to the garden. The gourmet kitchen, equipped with top-quality finishes and appliances,...

Features

Interior		Exterior		Sizes	
Bedrooms	4	Garages	4	Land Size	1,002m²
Bathrooms	5	Carports / Parkings	1		
Kitchens	1	Security	Yes		
Recep. Rooms	2	Pool	Yes		
Studies	1	Views	True		
Furnished	No				



<https://www.malherbex.com>