



MALHERBEX™
PROPERTY GROUP



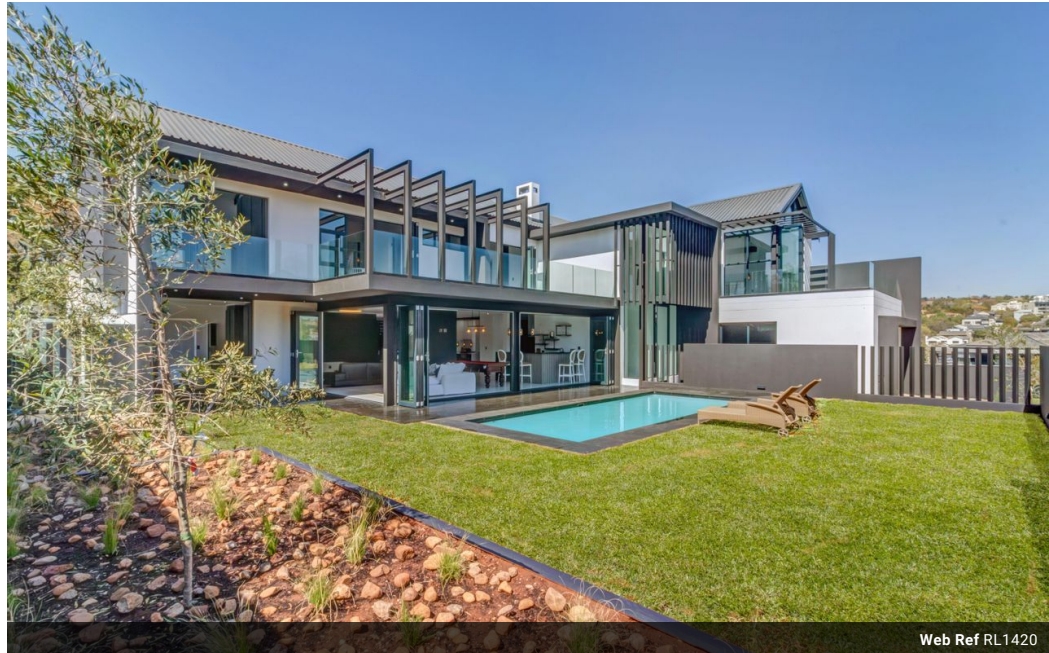
Elisha Botterill
0845558155
elisha@malherbex.com

Contact Head Office

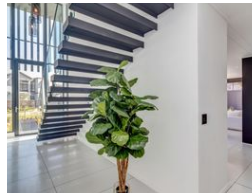
011 7869364

Unit 1 Cyrus House (Building 13) Mulberry
Hill Office Park, Dainfern, Sandton, 2191

5 Bedroom Freehold To Let in Helderfontein Estate



Web Ref RL1420



R80,000 pm

Monthly Levy R4,750

Lease Period 12 months

Availability Immediately

Deposit - Annual Escalation -

5 5 4

Exquisite 5 Bedroom Family Home!

Experience an elevated lifestyle at the iconic Helderfontein Residence, where unmatched design meets a prime location and outstanding investment potential.

With an expansive 495 sqm layout, this residence provides ample space for luxury living. It features double-volume ceilings and seamless transitions between its open-plan living areas, breathtaking views, premium imported finishes, and exclusive access to the estate's top-tier facilities.

The home's contemporary interior masterfully blends modern decor with wood, stone, and glass elements, creating a refined aesthetic.

Key Features:

- Elegant foyer that makes a grand first impression
- Five generously sized bedrooms, each with its full en-suite bathroom for ultimate privacy and comfort
- Sleek, modern bar area perfect for entertaining guests
- Private study,...

Features

Pets Allowed Yes

Interior

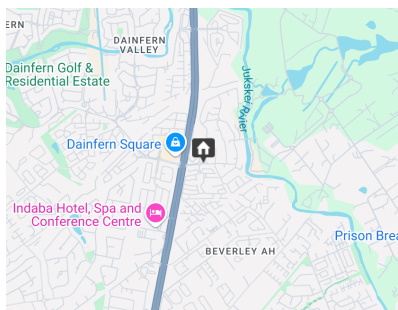
Bedrooms	5
Bathrooms	5
Kitchens	1
Recep. Rooms	3
Studies	1
Furnished	No

Exterior

Garages	4
Dom. Accom.	1
Pool	Yes

Sizes

Floor Size	495m ²
Land Size	700m ²



<https://www.malherbex.com>