



MALHERBEX™  
PROPERTY GROUP



**Elmine Clarke**  
0686913384  
elmine@malherbex.com



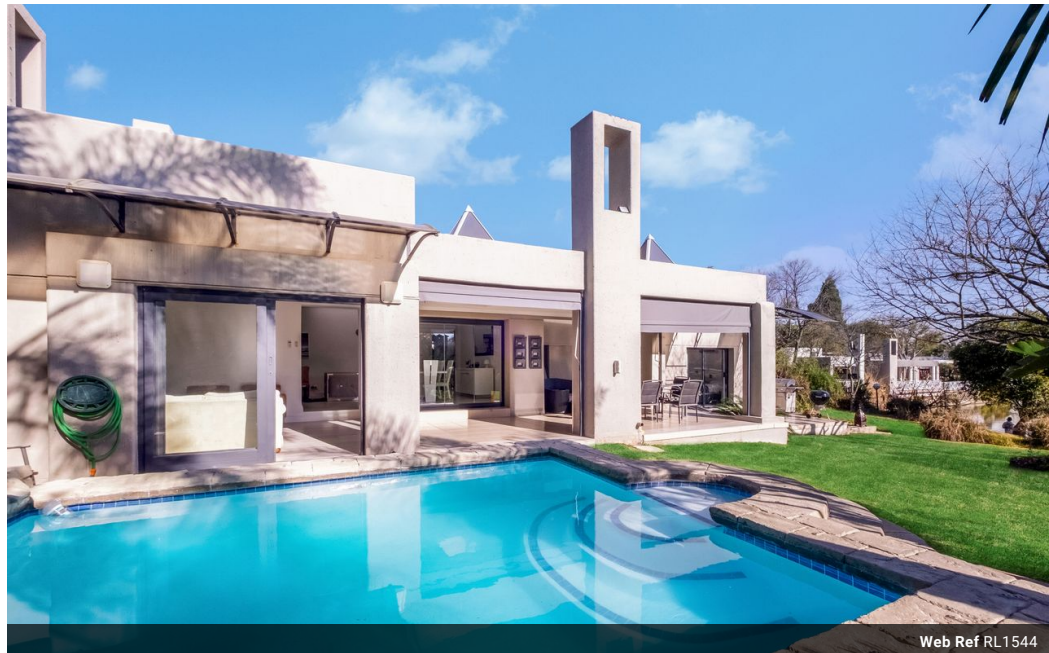
**Sean O'Grady**  
0718429999  
sean@malherbex.com

Contact Head Office

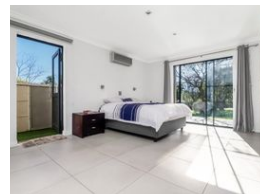
011 7869364

Unit 1 Cyrus House (Building 13) Mulberry  
Hill Office Park, Dainfern, Sandton, 2191

## 3 Bedroom House To Let in Cedar Lakes



Web Ref RL1544



R35,000 pm

**Lease Period** 12 months  
**Annual Escalation** -

**Availability** Immediately

**Deposit** R35,000

3 3.5 2

### Exquisite Lakeside Living in Secure Estate – R35 000pm (Includes Levies)

Exquisite Lakeside Living in Secure Estate – R35 000pm (Includes Levies)

Cedar Lakes Estate

NB: Not suitable for pets or small children due to open access to the lake.

Welcome to a rare opportunity to experience luxury, comfort, and tranquility in one of the most desirable positions within Cedar Lakes Estate. This exceptional home offers unobstructed views of the lake and a relaxed, almost holiday-like atmosphere – a true retreat from the everyday.

Key Features:

Three generous en-suite bedrooms, each offering privacy and space. The air-conditioned main suite features a walk-in closet, direct garden access, and a private balcony – perfect for morning coffee or evening wind-downs. Spacious open-plan living, with two light-filled reception areas opening through glass stacking and aluminium doors onto a covered entertainer's...

### Features

#### Interior

Bedrooms	3
Bathrooms	3.5
Kitchens	1
Recep. Rooms	2
Studies	1
Furnished	No

#### Exterior

Garages	2
Carports / Parkings	2
Security	Yes
Pool	Yes
Views	True

#### Sizes

Floor Size	230m <sup>2</sup>
Land Size	450m <sup>2</sup>