



MALHERBEX[™]
PROPERTY GROUP



Elisha Botterill
0845558155
elisha@malherbex.com

Contact Head Office

011 7869364

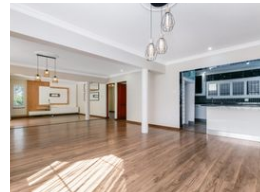
Unit 1 Cyrus House (Building 13) Mulberry
Hill Office Park, Dainfern, Sandton, 2191

6 Bedroom House Rented in Broadacres

RENTED



Web Ref RL1513



R32,000 pm

Lease Period 12 months
Annual Escalation -

Availability Immediately

Deposit -

🛏 6 🛁 3.5 🚗 2

Spacious 6 bedroom family home

This spacious and well-appointed family home offers a perfect blend of comfort, functionality, and style.

Upon entering, you are welcomed into the entrance hall that leads to the heart of the home. The kitchen, complete with a separate scullery, is designed for both everyday living and entertaining, and flows seamlessly into the formal dining room. The spacious lounge opens onto an enclosed patio featuring a built-in braai, ideal for year-round entertaining, and overlooks the beautifully maintained garden and sparkling swimming pool.

Downstairs also includes a private guest bedroom with its own en-suite bathroom, offering convenience and comfort for visitors.

Upstairs, a cozy pyjama lounge serves as a central hub to five well-sized bedrooms. The main bedroom boasts its own luxurious en-suite bathroom, while a separate...

Features

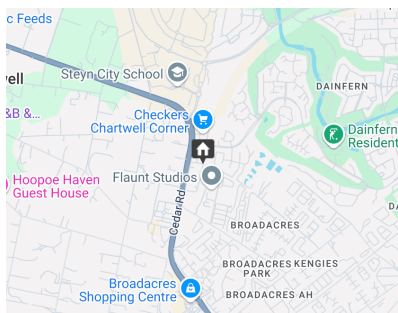
Pets Allowed Yes

Interior

Bedrooms	6
Bathrooms	3.5
Kitchens	1
Recep. Rooms	3
Furnished	No

Exterior

Garages	2
Security	Yes
Dom. Accom.	1
Pool	Yes
Views	False



<https://www.malherbex.com>