



MALHERBEX<sup>™</sup>  
PROPERTY GROUP



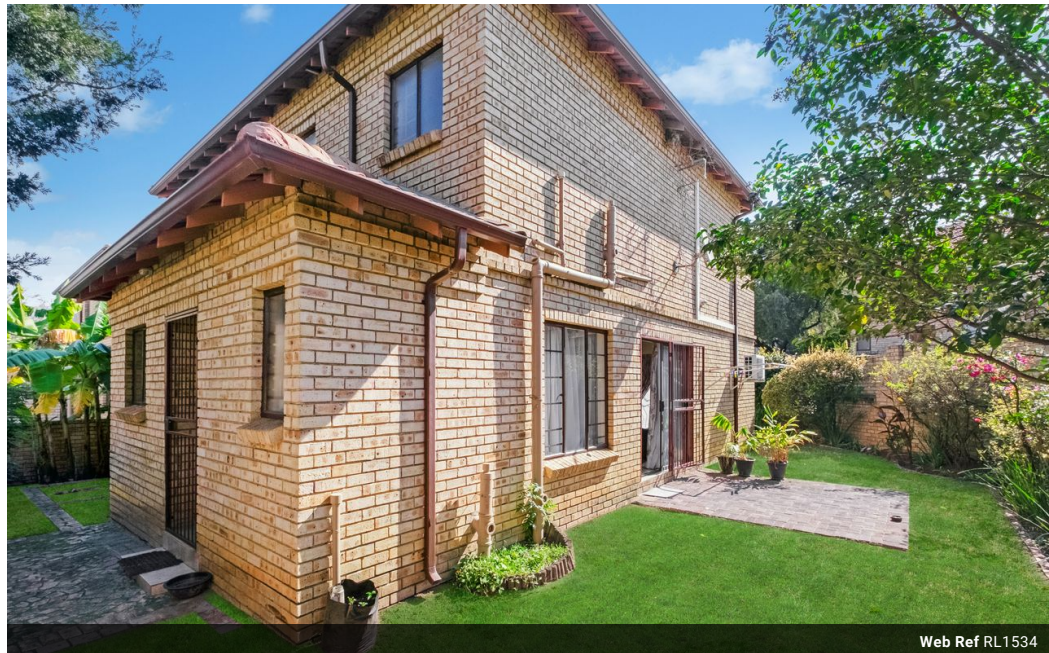
**Busi Chizwina**  
0713847066  
busi@malherbex.com

Contact Head Office

011 7869364

Unit 1 Cyrus House (Building 13) Mulberry  
Hill Office Park, Dainfern, Sandton, 2191

## 3 Bedroom Cluster To Let in Craigavon



Web Ref RL1534



R15,000 pm

**Lease Period** 12 months

**Annual Escalation** -

**Lease Excludes:**

Effluent, refuse, electricity

**Availability** Immediately

**Deposit** R17,000

3 2.5 2

### Stylish 3 Bedroom Family Home

Situated in the upmarket suburb of Craigavon, this spacious three bedroom, two and half bathroom home offers the perfect blend of comfort, security, and convenience – ideal for modern family living.

The ground floor features a seamless open-plan layout, comprising a lounge, dining area, and guest toilet. Sliding doors from the living area open onto a sunlit, pet-friendly garden – perfect for relaxing or entertaining. The well-appointed kitchen boasts granite countertops, ample cupboard space, a hob and under-counter oven, and room for three under-counter appliances plus a double-door fridge.

Upstairs, you'll find three generously sized bedrooms, all with built-in cupboards. The main bedroom includes an air conditioner, en-suite bathroom, and access to a private balcony – a peaceful retreat.

Additional features...

### Features

**Pets Allowed** Yes

#### Interior

Bedrooms	3
Bathrooms	2.5
Kitchens	1
Recep. Rooms	2
Furnished	No

#### Exterior

Garages	2
Carports / Parkings	2
Security	Yes
Pool	No
Views	False

#### Sizes

Floor Size	164m <sup>2</sup>
Land Size	164m <sup>2</sup>