



MALHERBEX™
PROPERTY GROUP



Elisha Botterill
0845558155
elisha@malherbex.com

Contact Head Office

011 7869364

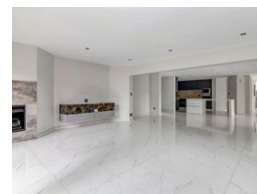
Unit 1 Cyrus House (Building 13) Mulberry
Hill Office Park, Dainfern, Sandton, 2191

4 Bedroom House To Let in Dainfern Golf Estate



SOLE MANDATE

Web Ref RL1343



R80,000 pm

Monthly Levy R4,720

Deposit R80,000

Lease Period 12 months

Annual Escalation -

Availability Immediately

🛏️ 4 🚿 4.5 🚗 3

Stunning Home in Secure Estate

Exclusive mandate.

Prepare to be swept off your feet by this exquisite home, boasting a meticulously designed exterior that will take your breath away. From the moment you step inside the grand foyer with its glass and marble finishes, you'll be enveloped in a luxurious atmosphere. The abundance of natural light pouring into the living spaces creates a welcoming and warm ambiance that is sure to make you feel right at home.

The main living areas are spacious and open-plan, flowing effortlessly into the gourmet kitchen that will make any chef's heart skip a beat. The large Caesar Stone island is perfect for entertaining, and the abundance of cupboards and storage space ensures that everything is within easy reach. On the lower level, you'll find a formal lounge with a built-in modern fireplace, providing the perfect spot...

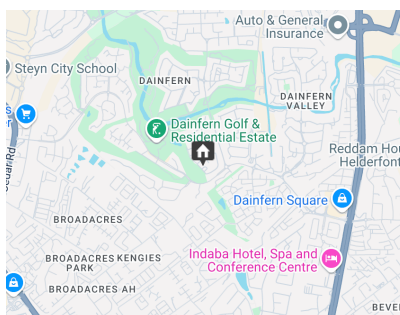
Features

Pets Allowed Yes

Interior	
Bedrooms	4
Bathrooms	4.5
Kitchens	1
Recep. Rooms	4
Studies	1
Furnished	No

Exterior	
Garages	3
Carports / Parkings	3
Security	Yes
Dom. Accom.	1
Pool	Yes

Sizes	
Floor Size	542m ²
Land Size	1,047m ²



<https://www.malherbex.com>