



MALHERBEX<sup>™</sup>  
PROPERTY GROUP



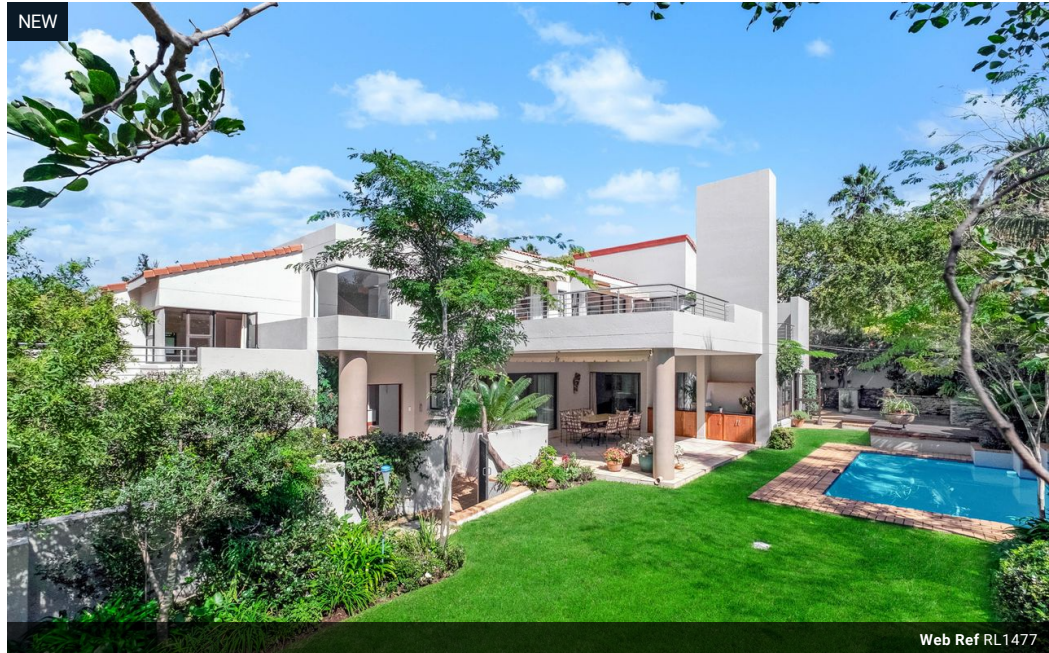
Elisha Botterill  
0845558155  
elisha@malherbex.com

Contact Head Office

011 7869364

Unit 1 Cyrus House (Building 13) Mulberry  
Hill Office Park, Dainfern, Sandton, 2191

## 4 Bedroom House To Let in Dainfern Golf Estate



R55,000 pm

Monthly Levy R4,490

Lease Period 12 months

Availability 01 Jun 2025

Deposit - Annual Escalation -

🛏️ 4 🚿 3.5 🚗 3

### Elegant four bedroom in the Heart of Dainfern Golf Estate!

Dual mandate!

Experience sophisticated estate living in this beautifully appointed 4-bedroom residence, ideally positioned in one of Dainfern's most exclusive estates.

Designed with both family comfort and effortless entertaining in mind, the home offers a harmonious flow across its spacious interior. From the moment you step into the impressive entrance hall, you'll be drawn into the warmth and functionality of the living spaces. The formal lounge and family room, complete with a wood-burning fireplace, both lead seamlessly to a generous covered patio, designed with entertainment in mind, while overlooking the swimming pool and pretty garden. Outdoor living is elevated by a stylish decked area with a built-in pizza oven, ideal for hosting gatherings under the stars.

The dining area is conveniently located next to the...

### Features

**Pets Allowed** Yes

#### Interior

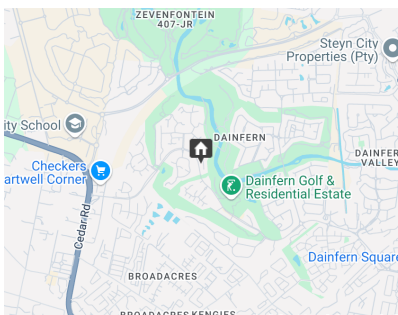
|              |     |
|--------------|-----|
| Bedrooms     | 4   |
| Bathrooms    | 3.5 |
| Recep. Rooms | 3   |
| Studies      | 1   |
| Furnished    | No  |

#### Exterior

|             |     |
|-------------|-----|
| Garages     | 3   |
| Dom. Accom. | 1   |
| Pool        | Yes |

#### Sizes

|           |                   |
|-----------|-------------------|
| Land Size | 832m <sup>2</sup> |
|-----------|-------------------|



<https://www.malherbex.com>