



MALHERBEX™
PROPERTY GROUP



Elisha Botterill
0845558155
elisha@malherbex.com

Contact Head Office

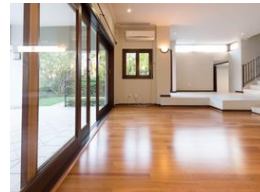
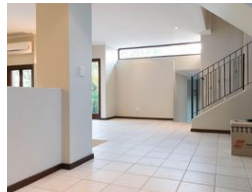
011 7869364

Unit 1 Cyrus House (Building 13) Mulberry
Hill Office Park, Dainfern, Sandton, 2191

4 Bedroom House To Let in Dainfern Golf Estate



Web Ref RL1484



R55,000 pm

Monthly Levy R4,720

Lease Period Negotiable

Availability 01 Aug 2025

Deposit - Annual Escalation -

🛏️ 4 🚿 3.5 🚗 3

Golf Course Living at Its Finest!

Nestled in a prime position with uninterrupted views of the golf course, this elegant family home offers a harmonious blend of comfort, functionality, and refined living.

Step through the welcoming entrance hall into a spacious open-plan living area that seamlessly combines the lounge and dining spaces - perfect for both everyday living and entertaining. Just off this central hub is a well-appointed kitchen, positioned to stay connected to the heart of the home while maintaining a sense of privacy and practicality.

Glass doors off the living spaces open effortlessly to a generous outdoor patio, ideal for alfresco dining and relaxing, all while taking in serene views of the manicured garden and sparkling swimming pool - your own private oasis.

The ground floor also offers a quiet study, perfect for working from home,...

Features

Pets Allowed Yes

Interior

Bedrooms	4
Bathrooms	3.5
Recep. Rooms	2
Studies	1
Furnished	No

Exterior

Garages	3
Security	No
Dom. Accom.	1
Pool	Yes
Views	False



<https://www.malherbex.com>