



MALHERBEX[™]
PROPERTY GROUP



Elisha Botterill
0845558155
elisha@malherbex.com

Contact Head Office

011 7869364

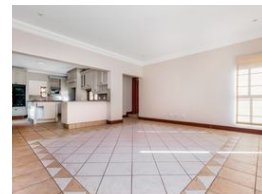
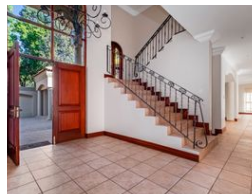
Unit 1 Cyrus House (Building 13) Mulberry
Hill Office Park, Dainfern, Sandton, 2191

5 Bedroom House To Let in Dainfern Golf Estate



SOLE MANDATE

Web Ref RL1537



R69,500 pm

Monthly Levy R4,760

Deposit R72,000

Lease Period 12 months

Annual Escalation -

Availability Immediately

🛏 5 🚿 5.5 🚗 3

Spacious 5 Bedroom Family Home In Secure Estate

Sole and exclusive mandate!

This north-facing family home, set on a spacious stand, epitomizes everything that makes Dainfern Golf Estate so desirable. With an emphasis on space, privacy, and entertainment, this home is perfect for the ultimate lifestyle.

Boasting five generous sized bedrooms and 5.5 bathrooms, the property features a guest suite conveniently located on the ground floor.

A grand double-volume entrance welcomes you into the home, leading to the formal lounge and study, while an adjacent formal dining room, family room, and covered patio provide an ideal setting for both relaxation and entertaining. The open-plan kitchen, complete with a scullery, flows effortlessly into the light-filled family room.

Step outside onto the covered patio with a built-in braai, overlooking the sparkling swimming pool and...

Features

Pets Allowed Yes

Interior

Bedrooms	5
Bathrooms	5.5
Kitchens	1
Recep. Rooms	3
Studies	1
Furnished	No

Exterior

Garages	3
Security	Yes
Dom. Accom.	1
Pool	Yes
Views	False

Sizes

Land Size	1,352m ²
-----------	---------------------