



MALHERBEX™  
PROPERTY GROUP



Elisha Botterill  
0845558155  
elisha@malherbex.com

Contact Head Office

011 7869364

Unit 1 Cyrus House (Building 13) Mulberry  
Hill Office Park, Dainfern, Sandton, 2191

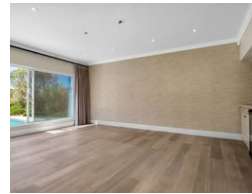
## 4 Bedroom House To Let in Dainfern Golf Estate

NEW



SOLE MANDATE

Web Ref RL1542



R75,000 pm

Monthly Levy R4,760

Lease Period Negotiable

Availability 01 Oct 2025

Deposit - Annual Escalation -

🛏️ 4 🚿 4.5 🚗 3

### Gorgeous 4 Bedroom Family Home In Secure Estate.

Exclusive sole mandate!

Upon entry, you are welcomed by a sun-filled entrance hall, leading seamlessly to the reception areas and kitchen. The expansive study room, with a second entrance from outside, presents versatile possibilities, like perhaps an additional bedroom, or a cozy TV or cinema room, or a home office with the convenience of operating a home-based business.

The bedroom arrangement is thoughtfully configured, with a generously sized en suite guest bedroom located on the ground floor and the remaining three bedrooms situated upstairs. The primary bedroom exudes elegance with its walk-in dressing area, luxurious full bathroom, and access to the balcony overlooking the scenic surroundings. The two additional bedrooms are strategically positioned to maximize the breathtaking views.

The gourmet kitchen is a chef's...

### Features

**Pets Allowed** Yes

#### Interior

Bedrooms	4
Bathrooms	4.5
Kitchens	1
Recep. Rooms	3
Studies	1
Furnished	No

#### Exterior

Garages	3
Security	No
Dom. Accom.	1
Pool	Yes
Views	False

#### Sizes

Land Size	871m²
-----------	-------