



MALHERBEX<sup>™</sup>  
PROPERTY GROUP



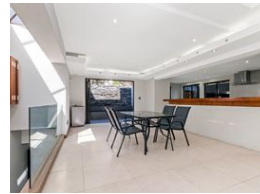
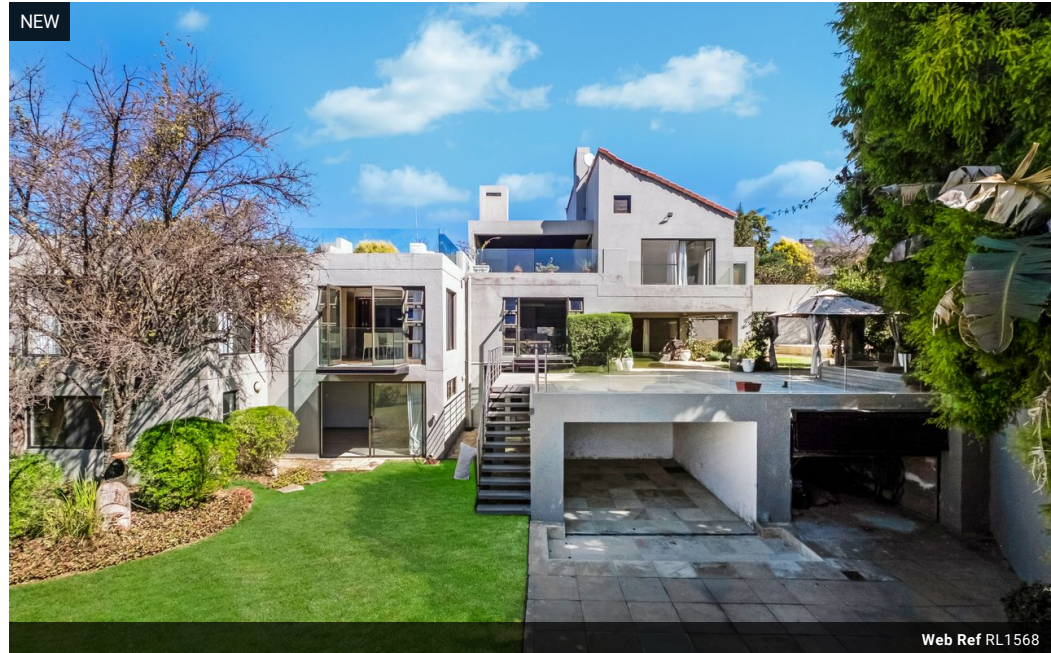
Elisha Botterill  
0845558155  
elisha@malherbex.com

Contact Head Office

011 7869364

Unit 1 Cyrus House (Building 13) Mulberry  
Hill Office Park, Dainfern, Sandton, 2191

## 5 Bedroom House To Let in Dainfern Golf Estate



R80,000 pm

Monthly Levy R4,760

Lease Period Negotiable

Availability Immediately

Deposit - Annual Escalation -

5 4.5 2

### Elegant 5 bedroom home with a view of the golf course!

Positioned along the lush greenbelt of a prestigious estate, this remarkable 5-bedroom residence presents a harmonious combination of luxury and superb entertainment options. Boasting panoramic views of the golf course, it's a rare gem for those who value both elegance and peace of mind.

Crafted with entertaining in mind, the home features a gourmet kitchen, which is a chef's delight, featuring a gas stove and breakfast bar that flows effortlessly to the dining and living areas. A generous sized covered patio perfect for hosting, complete with a cinema room and a stylish wine cellar to add an extra element of charm and sophistication.

The main suite is a true sanctuary—extra-large in scale, it includes a walk-in dressing room, a luxurious en-suite bathroom, and a private balcony with an outdoor shower, bringing a unique...

### Features

**Pets Allowed** Yes

#### Interior

Bedrooms	5
Bathrooms	4.5
Kitchens	1
Recep. Rooms	3
Furnished	No

#### Exterior

Garages	2
Security	No
Dom. Accom.	1
Pool	Yes
Views	True

#### Sizes

Land Size	839m <sup>2</sup>
-----------	-------------------