



MALHERBEX[™]
PROPERTY GROUP



Elisha Botterill
0845558155
elisha@malherbex.com

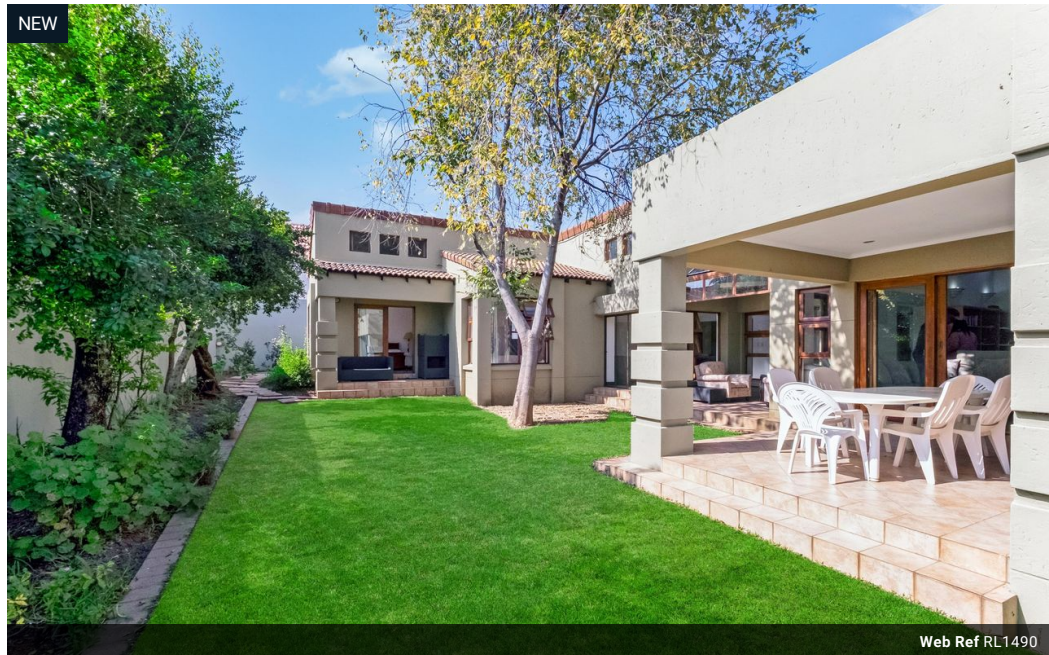
Contact Head Office

011 7869364

Unit 1 Cyrus House (Building 13) Mulberry
Hill Office Park, Dainfern, Sandton, 2191

3 Bedroom House To Let in Dainfern Ridge Estate

NEW



Web Ref RL1490



R33,000 pm

Monthly Levy R2,990

Lease Period 12 months

Availability 01 Aug 2025

Deposit - Annual Escalation -

3 2.5 2

Charming Single-Story Family Home with Garden Views!

Welcome to this beautifully presented single-story residence, offering a harmonious blend of comfort, functionality, and timeless appeal. From the moment you step through the front door, you are greeted by a welcoming entrance hall that sets the tone for the rest of the home.

Designed for both relaxed family living and entertaining, the home boasts multiple living spaces, including a formal lounge and an elegant dining room-perfect for hosting dinner parties or enjoying quiet evenings. The family room, ideally positioned off the dining room, flows seamlessly onto a covered patio, creating an ideal indoor-outdoor living experience. From here you can enjoy tranquil views of the neatly maintained garden, a perfect backdrop for morning coffees or weekend gatherings.

The well-appointed kitchen features a gas stove and ample...

Features

Pets Allowed Yes

Interior

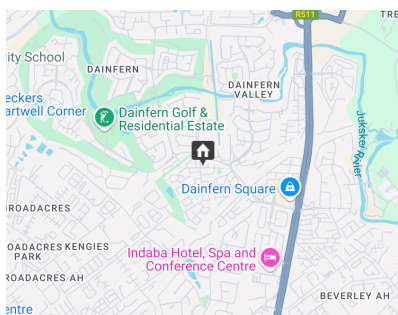
Bedrooms	3
Bathrooms	2.5
Recep. Rooms	3
Furnished	No

Exterior

Garages	2
Dom. Accom.	1
Pool	No

Sizes

Land Size	671m ²
-----------	-------------------



<https://www.malherbex.com>