



MALHERBEX[™]
PROPERTY GROUP



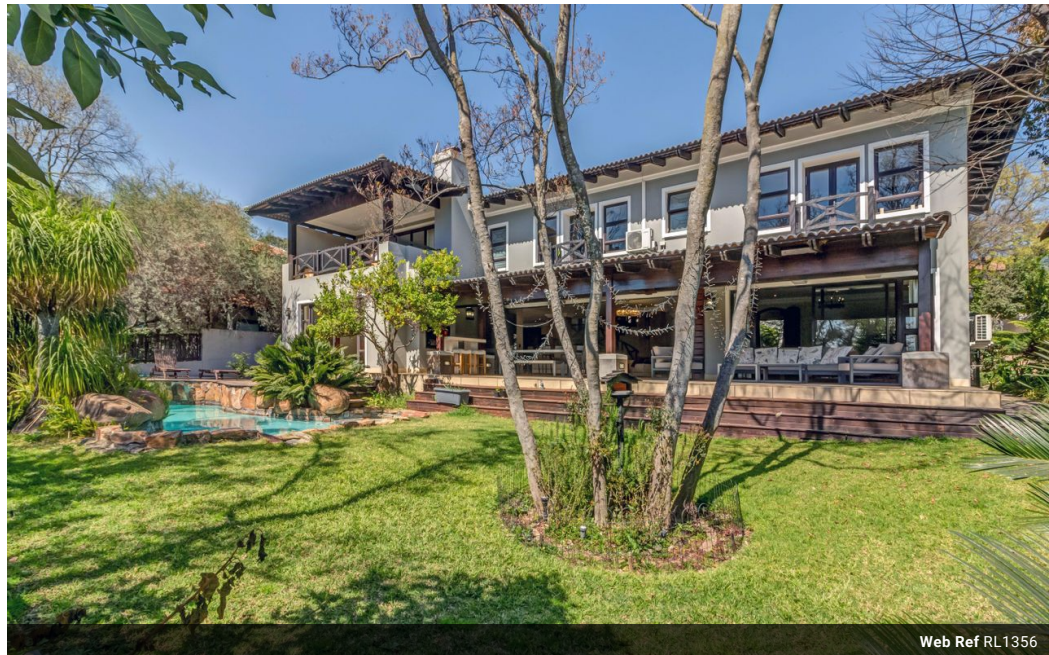
Elisha Botterill
0845558155
elisha@malherbex.com

Contact Head Office

011 7869364

Unit 1 Cyrus House (Building 13) Mulberry
Hill Office Park, Dainfern, Sandton, 2191

4 Bedroom Freehold To Let in Dainfern Valley Estate



Web Ref RL1356



R75,000 pm

Monthly Levy R4,510

Lease Period 12 months

Availability Immediately

Deposit - Annual Escalation -

4 4.5 3

Prime Position Wth River Views

Discover the unparalleled allure of Dainfern Valley Estate at its zenith. Nestled gracefully alongside the tranquil riverbanks, this executive residence offers a plethora of modern amenities meticulously tailored to meet the aspirations of contemporary families.

Embracing an open-concept design philosophy, this abode houses four generously proportioned en-suite bedrooms. The state-of-the-art open-plan kitchen, adorned with a breakfast bar, seamlessly connects to a welcoming family lounge accentuated by a cozy fireplace. Extending beyond, a spacious patio, complete with a built-in braai, commands captivating views of the meandering river and the lush expanses of the verdant greenbelt.

Venturing to the upper level of the home, one encounters three sun-drenched North-facing bedrooms, where the master suite reigns supreme...

Features

Interior

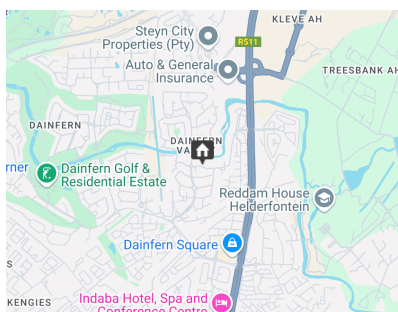
Bedrooms	4
Bathrooms	4.5
Recep. Rooms	3
Studies	1
Furnished	No

Exterior

Garages	3
Dom. Accom.	1
Pool	Yes

Sizes

Land Size	1,135m ²
-----------	---------------------



<https://www.malherbex.com>