



MALHERBEX™
PROPERTY GROUP



Elisha Botterill
0845558155
elisha@malherbex.com

Contact Head Office

011 7869364

Unit 1 Cyrus House (Building 13) Mulberry
Hill Office Park, Dainfern, Sandton, 2191

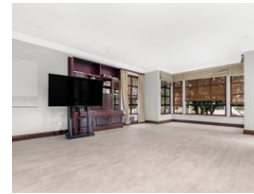
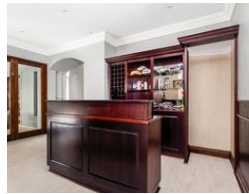
4 Bedroom House To Let in Dainfern Valley Estate

NEW



SOLE MANDATE

Web Ref RL1479



R70,000 pm

Monthly Levy R4,510

Lease Period Negotiable

Availability 01 Jun 2025

Deposit - Annual Escalation -

4 4.5 2

Elegant 4 Bedroom Family Home in the Heart of Dainfern Valley Estate!

Exclusive Sole Mandate!

This beautiful family home, situated on a generously sized stand, embodies the essence of refined estate living and captures everything that makes Dainfern Valley such a sought-after address. Designed to offer both comfort and effortless entertaining, this residence provides an exceptional rental opportunity for tenants seeking a premium lifestyle in a prestigious estate.

Upon entering, the grand double-volume entrance sets the tone for the elegance that follows, seamlessly leading into the lounge, built-in bar, and dining area. The well-appointed kitchen is a chef's dream, boasting a gas hob, ample counter space, and elegant cabinetry. A separate scullery ensures practicality and keeps the main kitchen area tidy, while the sunny and inviting breakfast nook offers a warm and casual setting for...

Features

Pets Allowed Yes

Interior

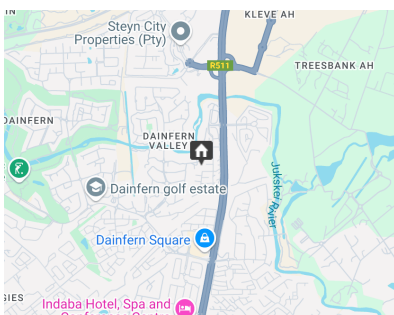
Bedrooms	4
Bathrooms	4.5
Recep. Rooms	3
Studies	1
Furnished	No

Exterior

Garages	2
Dom. Accom.	2
Pool	Yes

Sizes

Land Size	1,462m²
-----------	---------



<https://www.malherbex.com>