



MALHERBEX™
PROPERTY GROUP



Elisha Botterill
0845558155
elisha@malherbex.com

Contact Head Office

011 7869364

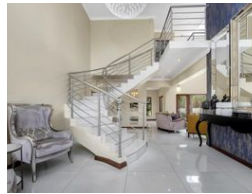
Unit 1 Cyrus House (Building 13) Mulberry
Hill Office Park, Dainfern, Sandton, 2191

4 Bedroom House To Let in Dainfern Valley Estate

NEW



Web Ref RL1514



R65,000 pm

Monthly Levy R4,510

Lease Period 12 months

Availability Immediately

Deposit - Annual Escalation -

🛏 4 🚿 4.5 🚗 3

Contemporary Residence in a Gated Community

Situated on a corner stand, this fully furnished residence represents the epitome of contemporary luxury. Every detail of this residence has been meticulously renovated to the highest standard, creating a truly exceptional living space. Offering the utmost comfort and privacy, this property boasts 4 beautiful bedrooms, each with its own en suite bathroom. Thoughtfully designed, the layout ensures ample space for everyone, with 1 bedroom conveniently located on the ground floor and 3 bedrooms on the upper level.

Prepare to be captivated by the seamless flow of the open-plan concept, gracefully connecting three inviting reception areas. Whether you're hosting a gathering or simply enjoying everyday life, this space effortlessly combines style and functionality. The property also features a dedicated study, a stylish kitchen...

Features

Pets Allowed Yes

Interior

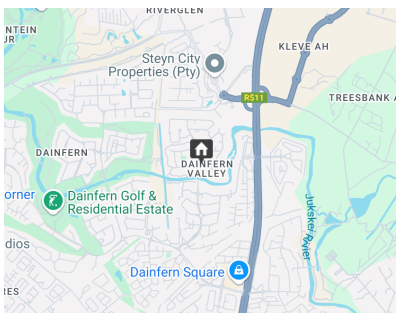
| | |
|--------------|-----|
| Bedrooms | 4 |
| Bathrooms | 4.5 |
| Kitchens | 1 |
| Recep. Rooms | 4 |
| Studies | 1 |
| Furnished | Yes |

Exterior

| | |
|---------------------|-----|
| Garages | 3 |
| Carports / Parkings | 3 |
| Dom. Accom. | 1 |
| Pool | Yes |

Sizes

| | |
|------------|---------------------|
| Floor Size | 500m ² |
| Land Size | 1,174m ² |



<https://www.malherbex.com>