



MALHERBEX™  
PROPERTY GROUP



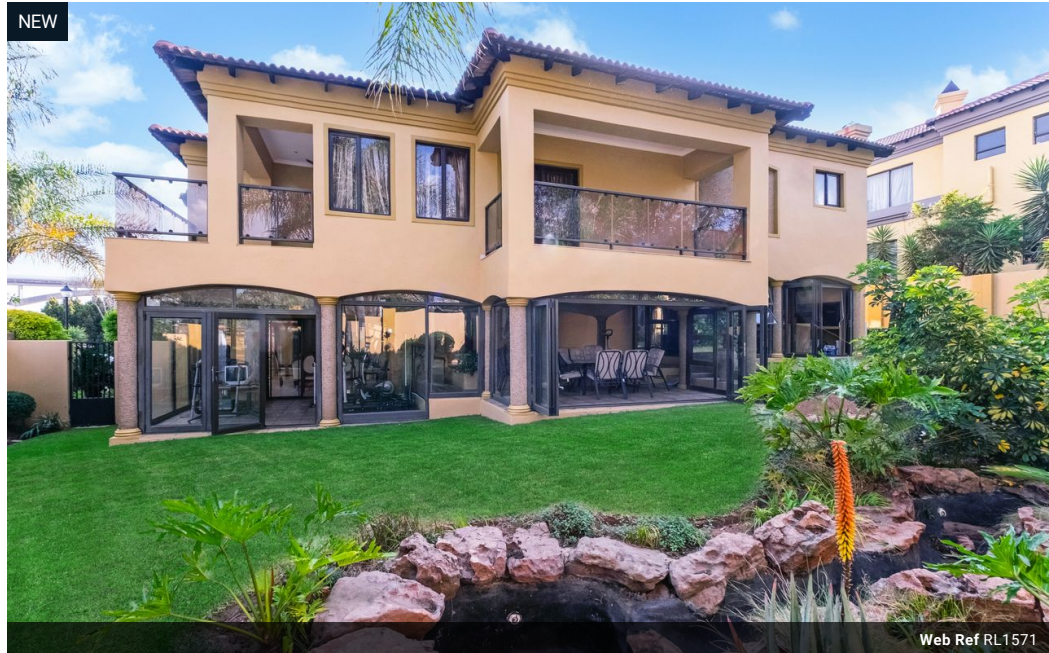
Elisha Botterill  
0845558155  
elisha@malherbex.com

Contact Head Office

011 7869364

Unit 1 Cyrus House (Building 13) Mulberry  
Hill Office Park, Dainfern, Sandton, 2191

## 5 Bedroom House To Let in Dainfern Valley Estate



R50,000 pm

Monthly Levy R4,510

Lease Period Negotiable

Availability 10 Oct 2025

Deposit - Annual Escalation -

5 4.5 4

### A Private Haven of Leisure and Luxury in Dainfern Valley Estate

Positioned on a corner stand in the sought-after Dainfern Valley Estate, this extraordinary home delivers a lifestyle of privacy, comfort, and refined sophistication. Designed with both relaxed family living and stylish entertaining in mind, every element of this home reflects considered craftsmanship and practicality.

Step inside and experience a warm, welcoming ambiance, where a sweeping entrance hall sets the tone with high ceilings and natural light pouring in from every angle. The layout flows organically through the living areas that opens to the outdoors, creating a seamless connection between inside and out.

An impressive feature of this home is the heated indoor pool—thoughtfully positioned to be enjoyed all year-round, no matter the weather. It's the centre of attention, surrounded by multiple living and...

### Features

Pets Allowed		Yes			
Interior				Sizes	
Bedrooms	5			Land Size	1,124m²
Bathrooms	4.5				
Kitchens	1				
Recep. Rooms	4				
Studies	1				
Furnished	No				
Exterior					
Garages	4				
Security	No				
Dom. Accom.	1				
Pool	Yes				
Views	False				