



MALHERBEX™
PROPERTY GROUP



Elmine Clarke
0686913384
elmine@malherbex.com



Willie Malherbe
0834257174
willie@malherbex.com

Contact Head Office

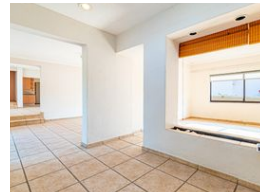
011 7869364

Unit 1 Cyrus House (Building 13) Mulberry
Hill Office Park, Dainfern, Sandton, 2191

4 Bedroom House To Let in Fourways Gardens



Web Ref RL1450



R34,800 pm

Monthly Levy R3,600

Lease Period 12 months

Availability Immediately

Deposit - Annual Escalation -

Lease Excludes:
Utilities.

 4  2.5  2

Beautiful home in a secure estate!

Beautiful home in a secure estate!

This family home ticks all the boxes for estate living. It is light and bright, with doors leading to the private garden and pool area from just about every room. All bedrooms have newly fitted laminate flooring.

As you enter the home through the entrance hall and formal lounge, you are led into an inviting family room with sliding doors that open to the pool area. It is adjacent to the dining room and open-plan kitchen. The kitchen features a gas hob and a separate scullery, which provides space for a washing machine, tumble dryer, and dishwasher. The staff room is accessible from the courtyard at the kitchen door.

All four bedrooms have sliding doors opening to the garden and built-in cupboards. The spacious main bedroom has an en-suite bathroom and a dressing room. A second full...

Features

Pets Allowed Yes

Interior

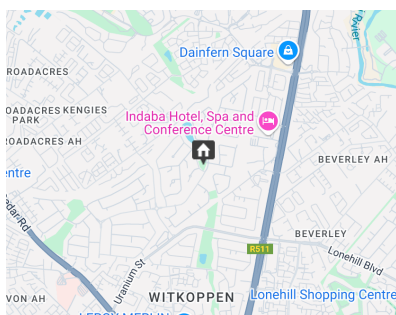
Bedrooms	4
Bathrooms	2.5
Kitchens	1
Recep. Rooms	3
Furnished	No

Exterior

Garages	2
Carports / Parkings	4
Security	Yes
Dom. Accom.	1
Pool	Yes
Views	False

Sizes

Land Size	983m ²
-----------	-------------------



<https://www.malherbex.com>