



MALHERBEX™
PROPERTY GROUP



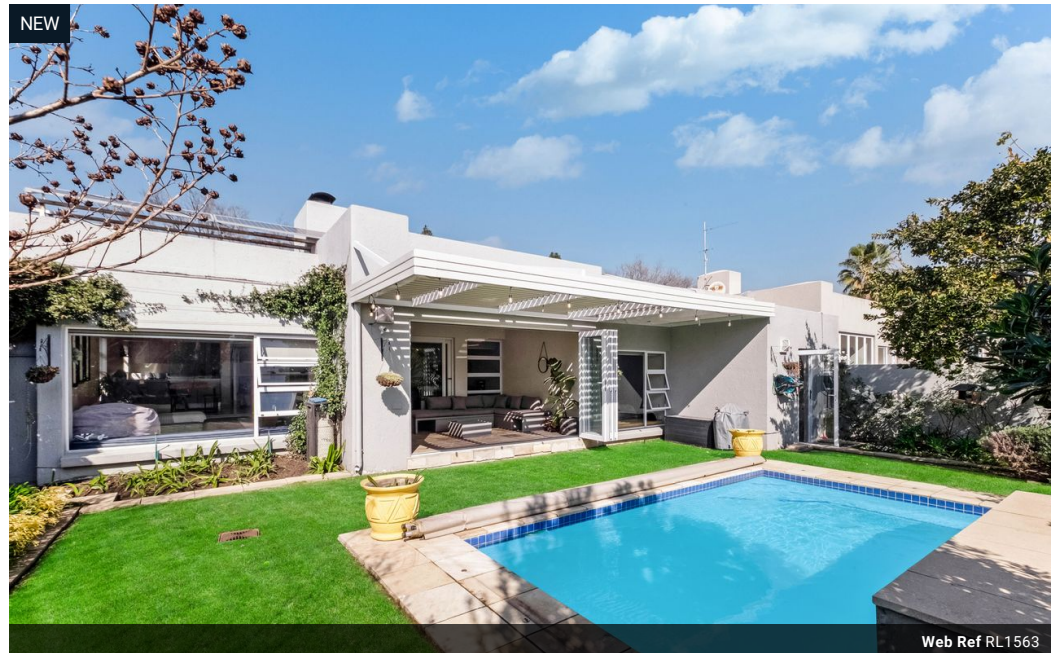
Elmine Clarke
0686913384
elmine@malherbex.com

Contact Head Office

011 7869364

Unit 1 Cyrus House (Building 13) Mulberry
Hill Office Park, Dainfern, Sandton, 2191

3 Bedroom House To Let in Fourways Gardens



R37,000 pm

Monthly Levy R3,600 **Lease Period** 12 months **Availability** 01 Oct 2025

Deposit R37,000 **Annual Escalation** -

Lease Excludes:

Water and municipal service charges.

 3  3  2

The Perfect Blend of Comfort and Luxury in Sunbird Close

Rental includes estate levies and a weekly gardener!

This immaculate and beautifully upgraded home offers the perfect blend of modern comfort, stylish finishes, and functional family living. Boasting three spacious bedrooms and two full bathrooms, the house also features a separate study with its private bathroom – ideal for a home office. The main bedroom includes a luxurious en-suite bathroom, and all bedrooms have been upgraded with new laminate flooring and modern wrap cupboards, creating a fresh and contemporary feel throughout the home.

The heart of the home is a well-appointed kitchen fitted with a 90cm gas cooker, a built-in Miele dishwasher, and a separate scullery, offering ample space and convenience for everyday cooking and entertaining. Two lounges offer comfortable living spaces, one of which is enhanced by a...

Features

Pets Allowed Yes

Interior

Bedrooms	3
Bathrooms	3
Kitchens	1
Recep. Rooms	3
Studies	1
Furnished	No

Exterior

Garages	2
Carports / Parkings	2
Security	Yes
Pool	Yes
Views	False

Extras

24 Hour Access Air Conditioner Irrigation System Cluster Home Freestanding Gas Oven