



MALHERBEX[™]
PROPERTY GROUP



Dwayne Moffat
0680258263
dwayne@malherbex.com

Contact Head Office

011 7869364

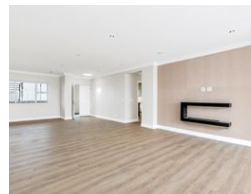
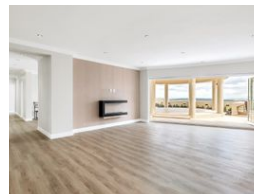
Unit 1 Cyrus House (Building 13) Mulberry
Hill Office Park, Dainfern, Sandton, 2191

3 Bedroom Apartment To Let in Morningside



SOLE MANDATE

Web Ref RL1422



R70,000 pm

Lease Period 12 months
Annual Escalation -

Availability Immediately

Deposit R80,000

3 2 2

Luxury Penthouse Living with Breathtaking Views

Ideally positioned near the heart of Sandton's CBD, this newly renovated penthouse epitomizes sophistication and seamless modern living. Designed for effortless flow, the expansive open-plan layout connects two elegant lounges and a refined dining area, all extending onto a generous terrace with panoramic views. This outdoor sanctuary is perfect for alfresco dining, relaxed lounging, and features a beautifully designed covered gazebo.

The gourmet kitchen is a chef's delight, boasting a bespoke design with a central island and top-of-the-line integrated appliances, ensuring both style and functionality.

The penthouse comprises three spacious bedrooms and two full bathrooms. The primary suite is a true retreat, featuring a walk-in dressing room and a versatile space ideal for a private office or lounge.

Additional...

Features

Interior

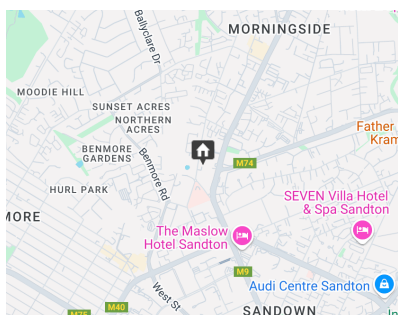
Bedrooms	3
Bathrooms	2
Kitchens	1
Recep. Rooms	3
Furnished	No

Exterior

Garages	2
Security	Yes
Dom. Accom.	1
Pool	Yes
Views	True

Sizes

Floor Size	440m ²
------------	-------------------



<https://www.malherbex.com>