



MALHERBEX™
PROPERTY GROUP



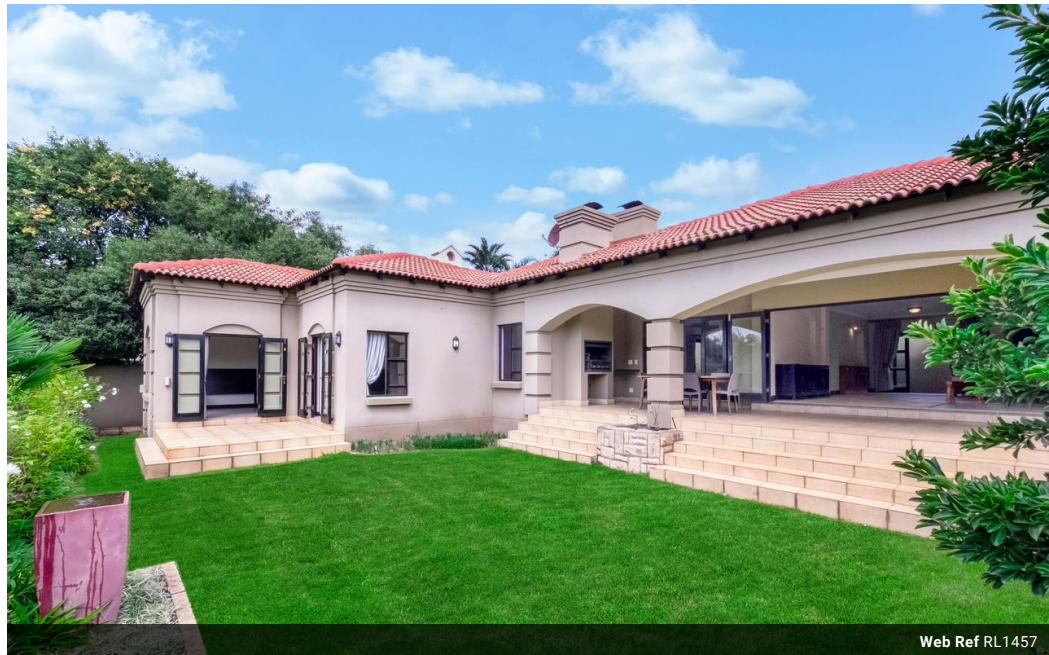
Elisha Botterill
0845558155
elisha@malherbex.com

Contact Head Office

011 7869364

Unit 1 Cyrus House (Building 13) Mulberry
Hill Office Park, Dainfern, Sandton, 2191

4 Bedroom House To Let in Dainfern Ridge Estate



Web Ref RL1457



R42,000 pm

Monthly Levy R2,990

Lease Period 12 months

Availability Immediately

Deposit - Annual Escalation -

🛏️ 4 🚿 3.5 🚗 3

Tranquil 4 Bedroom Family Home In Secure Estate!

Nestled in the tranquil and prestigious Dainfern Ridge Estate, this outstanding 4-bedroom home boasts stunning views of a serene dam, set in a secure family-friendly community.

As you enter, the expansive open-plan design immediately welcomes you, creating an atmosphere of both comfort and elegance. The bright and airy lounge and dining areas effortlessly flow into a spacious covered patio, featuring a built-in braai ideal for hosting gatherings while enjoying uninterrupted views of the manicured gardens and peaceful dam.

The family room, with its seamless connection to the patio and pet-friendly garden, opens up to a generous maple kitchen. This kitchen is a chef's dream, with a central island breakfast bar, double eye-level ovens, and a separate scullery and laundry. The family room is further enhanced by a cozy gas...

Features

Pets Allowed Yes

Interior

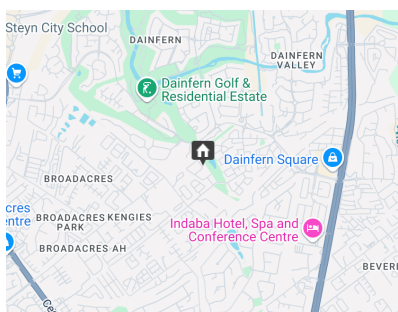
Bedrooms	4
Bathrooms	3.5
Kitchens	1
Recep. Rooms	3
Furnished	No

Exterior

Garages	3
Dom. Accom.	1
Pool	No

Sizes

Land Size	722m²
-----------	-------



<https://www.malherbex.com>