



MALHERBEX™
PROPERTY GROUP



Elisha Botterill
0845558155
elisha@malherbex.com

Contact Head Office

011 7869364

Unit 1 Cyrus House (Building 13) Mulberry
Hill Office Park, Dainfern, Sandton, 2191

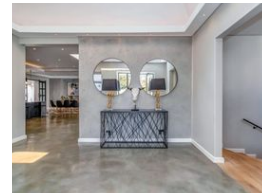
4 Bedroom House To Let in Dainfern Golf Estate

NEW



SOLE MANDATE

Web Ref RL1491



R145,000 pm

Monthly Levy R4,720

Lease Period 12 months

Availability 01 Aug 2025

Deposit - Annual Escalation -

4 4 5

A Modern and Contemporary Masterpiece

Exclusive sole mandate!

Located within the prestigious Dainfern Golf Estate, this beautifully renovated residence is the epitome of modern luxury and timeless elegance. Redesigned by one of South Africa's premier interior design and construction firms, every detail of this home has been thoughtfully considered to create a sophisticated and comfortable living environment.

Set on an expansive 1,700 sqm stand, the property offers generous space for family living and entertaining. The architecture combines classic, clean lines with contemporary finishes, featuring polished screed and oak flooring throughout.

As you enter the home, you're welcomed into airy, open-plan living spaces that seamlessly connect the indoors with the lush, landscaped garden. Designed for both relaxation and entertainment, highlights include a...

Features

Pets Allowed Yes

Interior

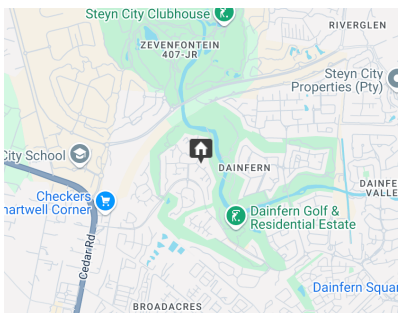
Bedrooms	4
Bathrooms	4
Kitchens	1
Recep. Rooms	4
Studies	1
Furnished	No

Exterior

Garages	5
Dom. Accom.	1
Pool	Yes

Sizes

Floor Size	722m ²
Land Size	1,680m ²



<https://www.malherbex.com>